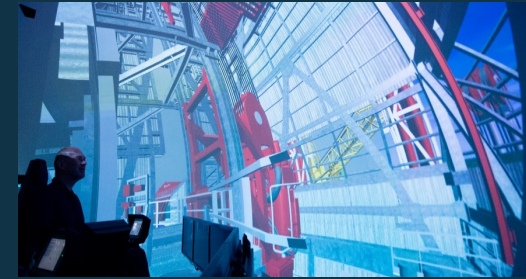


Schlumberger



The ExplorePlan (DELFI) Journey

Boosting the Discovery of New Exploration Opportunities

SIS Forum 2019

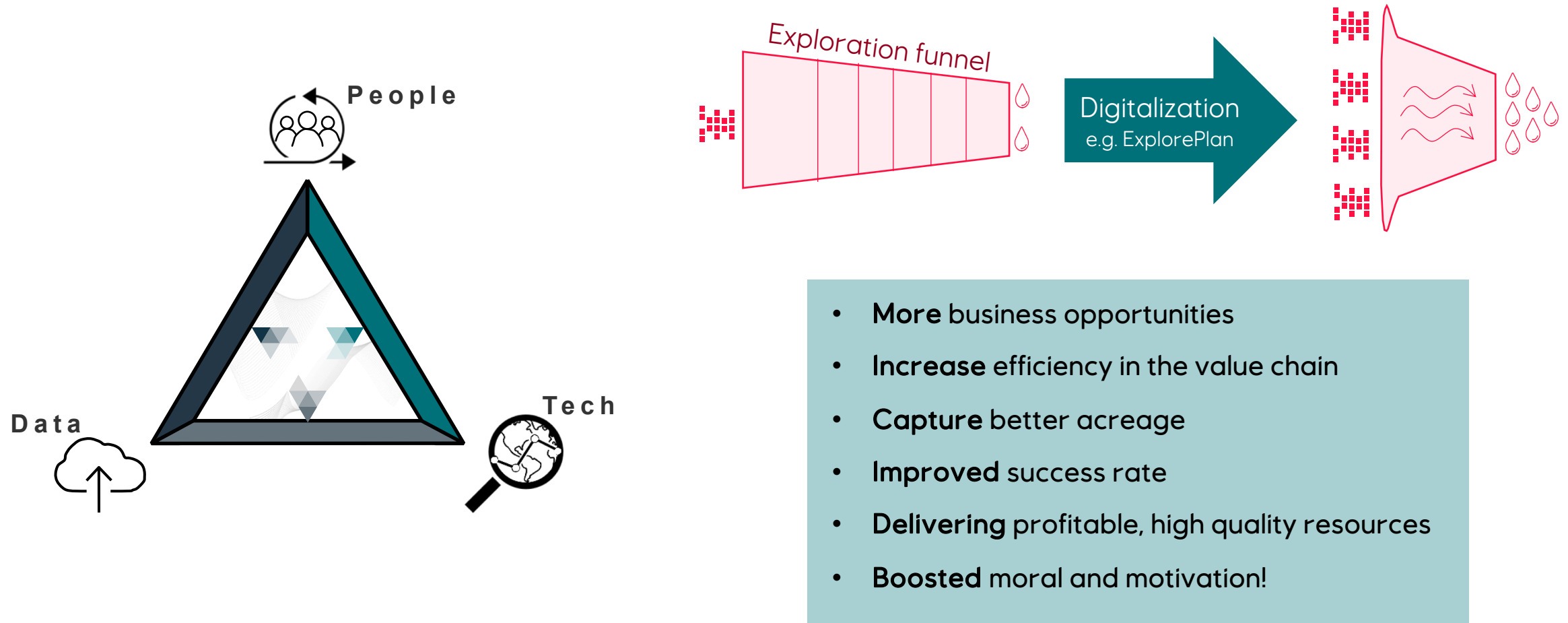
Markus Geiger (Equinor – Advisory Role)

Charlotte Fraser, Claire Castagnac (Schlumberger – Technical execution)

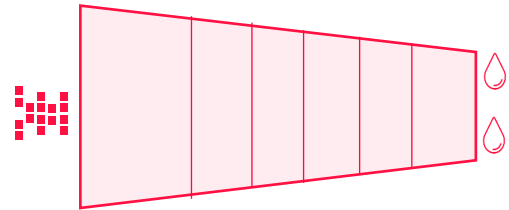


DIGEXP talk 14.45, Room 1

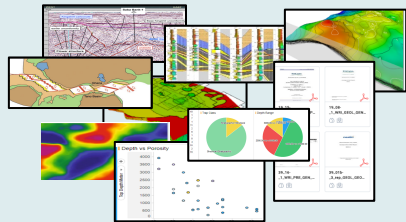
Equinor | A Leading Digital Explorer



Exploration Process | Pain-points



Data and Information Pool



Data is

- difficult to find
- non-searchable, neither referenced nor indexed
- hidden behind applications
- not single source & different formats

Teams/Leadership



- Insufficient communication
- Unclear roles and responsibilities
- Individual interpretation of requirements
- Knowledge moves with people

Consequences

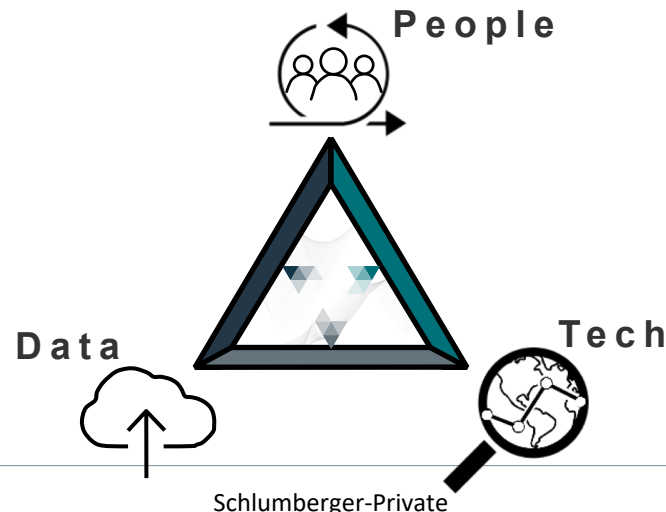
- Sub-optimal decisions due to time loss and incomplete data foundation
- Knowledge decays & loss

Platforms and Applications



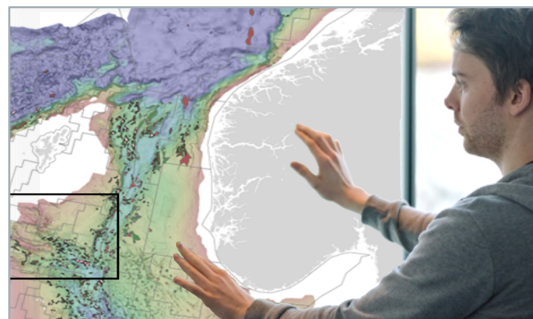
Fragmented Tool landscape

- Multiple applications (no one big picture!)
- No contextual flow (how did we get here?)
- No decision capturing (why was that done?)



Mission Statement

A hydrocarbon exploration management tool that plans, tracks and facilitates the creation, iteration and maturation of new and existing opportunities in the exploration funnel



Projects

Data Discovery

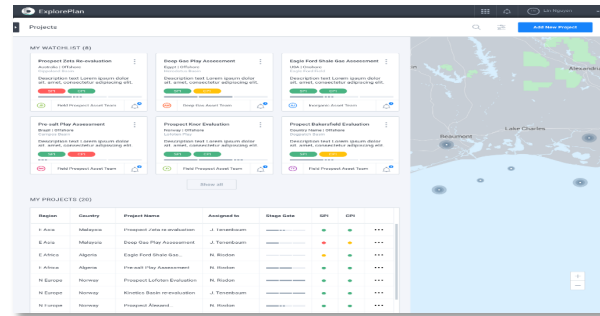
Opportunity Inventory & Assessment

Knowledge Board

ExplorePlan | Components and Goals for Phase 2

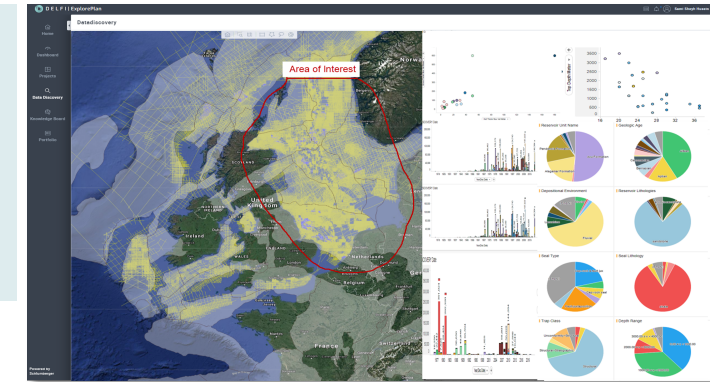
Project

- Subsurface projects planner: overview, including project types, team and tasks
- Defines and manages decision gates: milestones, deliverables



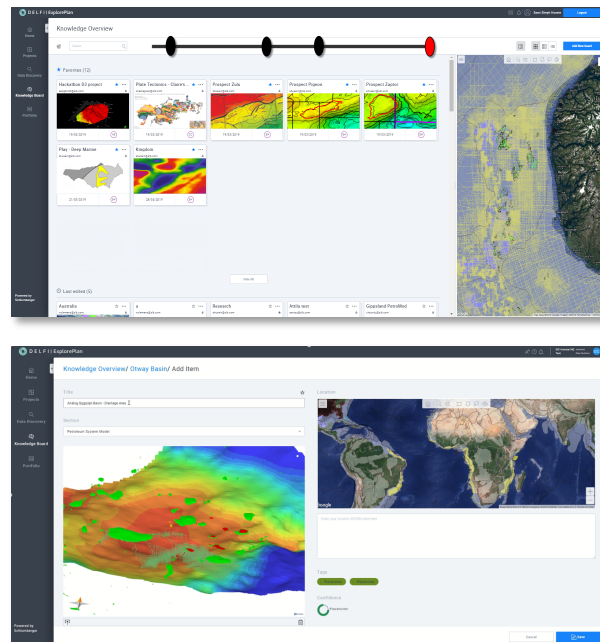
Data Discovery

- Smart search and shopping basket
- Data analytics to quality control data



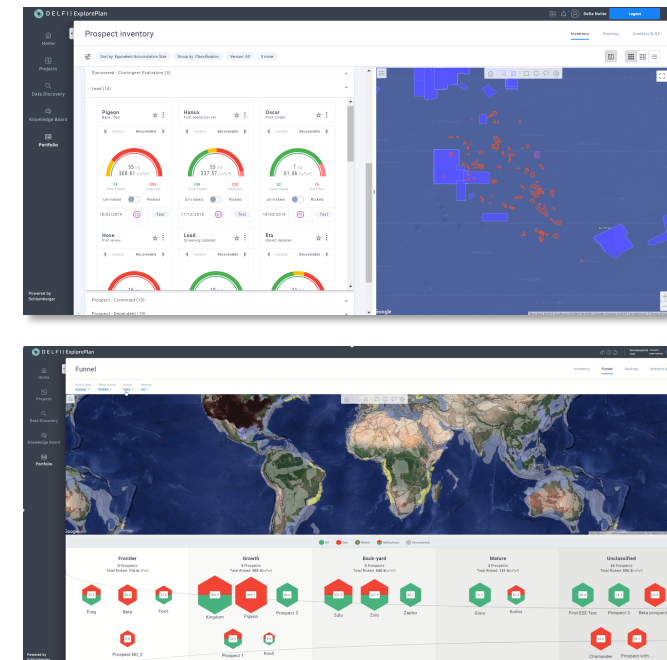
Knowledge Board

- Boards fully customizable for user type, opportunity type and technical requirements
- Board timeline and versioning (decision gates)
- Consumes any data sources (unstructured data, Petrel etc.)
- Collaborative functions for teams and reviewers
- Dynamic reports of predefined templates (documentation requirements)

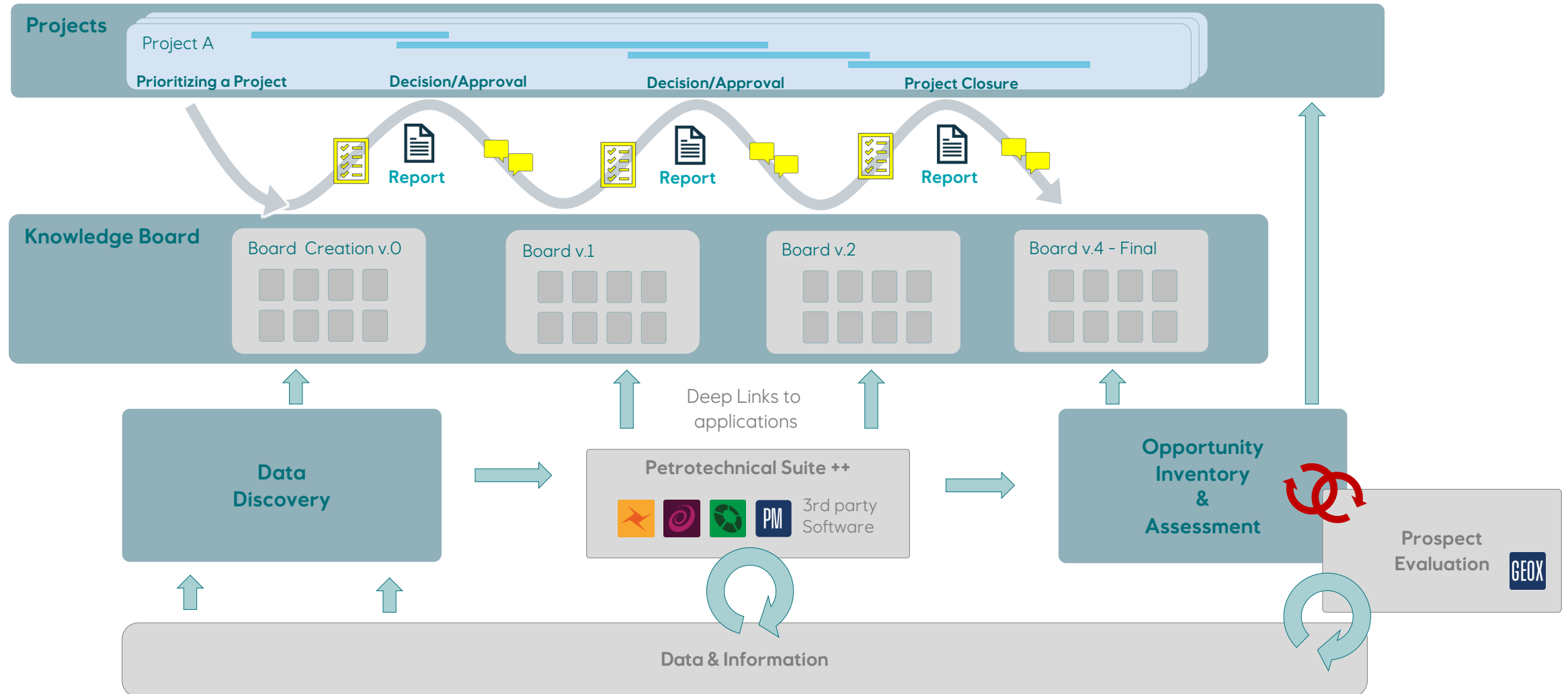


Opportunity Inventory & Assessment

- Interactive interface to prospect evaluation tool (GeoX)
- Multi-scenario assessment function
- Analogue suggestions for probability distributions
- Auto-populate parameters from analogous prospect assessments
- Interactive analytics of prospect parameters from a portfolio selection



ExplorePlan | Information Streams and Interfaces



ExplorePlan | Projects

The screenshot displays the 'Projects Dashboard' within the ExplorePlan application. The interface features a dark sidebar on the left with navigation options: Home, Projects (highlighted), Data Discovery, Knowledge Board, and Portfolio. The main content area is titled 'Projects Dashboard' and includes a search bar and a 'Show All' button. It is organized into four sections: 'New venture (0)', 'Basin (3)', 'Lead (2)', and 'Prospect (7)'. Each section contains project cards with titles, dates, and status icons. The 'Basin' section includes 'Basin Analysis Gippeland', 'Basin Prospectivity - Otway Basin', and 'Discovery HighBay Play Assess...'. The 'Lead' section includes 'Pre-salt Play Assessment' and 'Deep Gas Play Assessment'. The 'Prospect' section includes 'Prospect High Bay', 'Otway prospecting', 'Prospect Argonaut', 'Prospect Trumpet', 'Prospect Mussel Platform', and 'Prospect Voluta'. The bottom of the dashboard shows a URL and a 'Powered by Schlumberger' logo.

DELF | ExplorePlan

SIS Internal HQ (Account)
Test (Data Portfolio)

Home
Projects
Data Discovery
Knowledge Board
Portfolio

Projects Dashboard

Search

Add new project

New venture (0)

Show All

Basin (3)

Basin Analysis Gippeland

21/06/2019

Basin Prospectivity - Otway Basin

21/06/2019

Discovery HighBay Play Assess...

17/07/2019

Show All

Lead (2)

Pre-salt Play Assessment

21/06/2019

Deep Gas Play Assessment

21/06/2019

Show All

Prospect (7)

Prospect High Bay

09/07/2019

Otway prospecting

19/07/2019

Prospect Argonaut

20/07/2019

Prospect Trumpet

20/07/2019

Prospect Mussel Platform

20/07/2019

Prospect Voluta

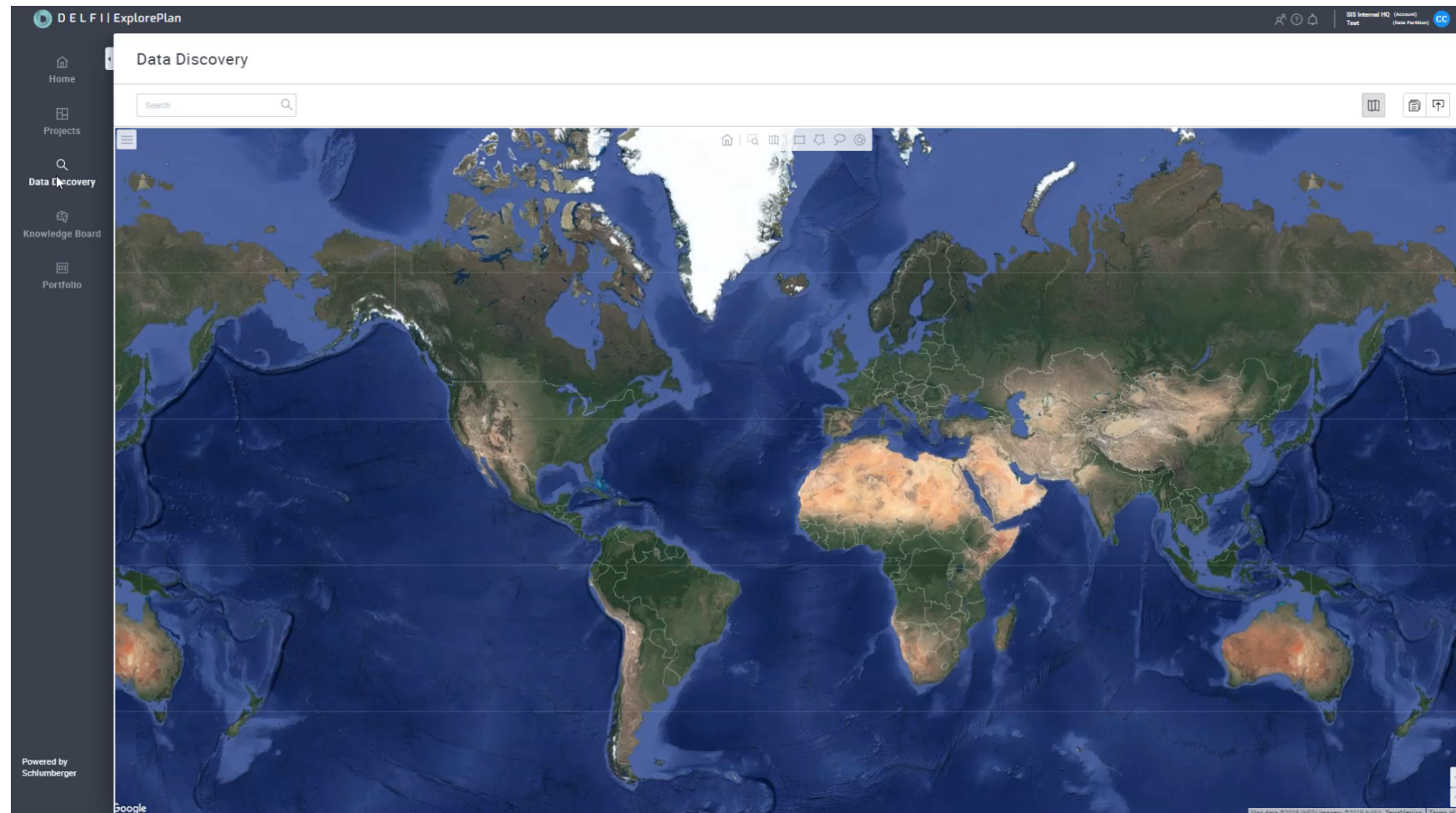
20/07/2019

Powered by Schlumberger

<https://exploreplan.p4d.subsurface.cloud.slb-ds.com/projects-dashboard>

ExplorePlan | Data & Analogues discovery environment

Schlumberger



ExplorePlan | Knowledge Board

DELF | ExplorePlan

Knowledge Overview

Search:

★ Favorites (2)

Otway Basin 22/08/2019 CW

Gippsland Basin - Basin t... 11/07/2019 CC

Show All

🕒 Last edited (5)

Otway Basin 22/08/2019 CW

Basin 19/08/2019 CC

Gippsland Basin 14/08/2019 CW

Browee Basin 12/08/2019 CW

Hydrocarbon potential of... 25/07/2019 RA

Show All

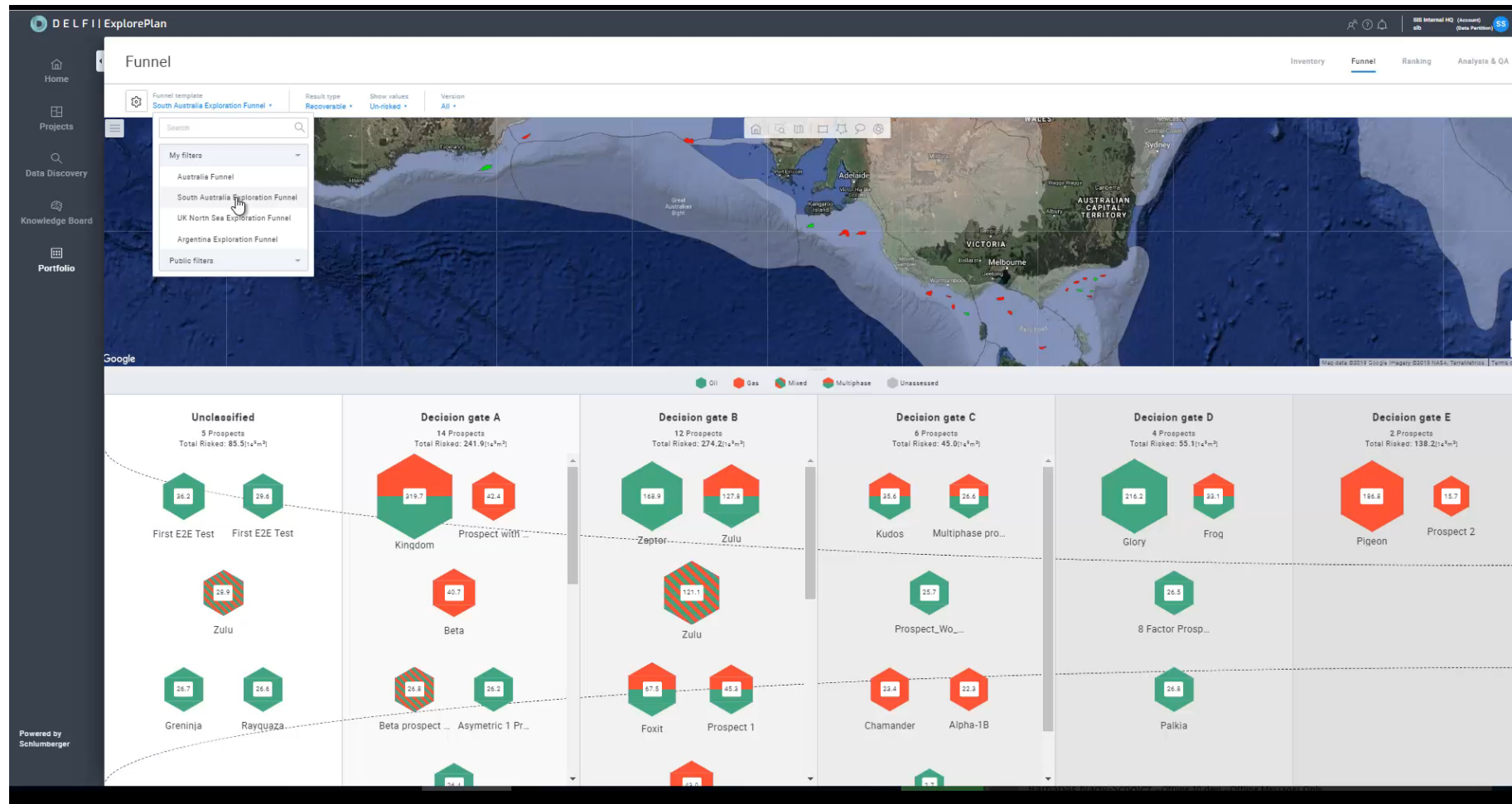
🔒 Private boards (2)

Offshore Newfoundland

Gippsland Basin - Basin t...

Powered by Schlumberger

ExplorePlan | Funnel Inventory & assessment tool



| Boosting the Discovery of New Exploration Opportunities

- Work more efficiently
- Always build on knowledge, never loose it
- Make better-informed decisions
- Find more oil and quicker



The ExplorePlan Journey

SIS Forum 2019

Markus Geiger (Equinor),
Charlotte Fraser & Claire Castagnac (Schlumberger)

© Equinor ASA

This presentation, including the contents and arrangement of the contents of each individual page or the collection of the pages, is owned by Equinor. Copyright to all material including, but not limited to, written material, photographs, drawings, images, tables and data remains the property of Equinor. All rights reserved. Any other use, reproduction, translation, adaption, arrangement, alteration, distribution or storage of this presentation, in whole or in part, without the prior written permission of Equinor is prohibited. The information contained in this presentation may not be accurate, up to date or applicable to the circumstances of any particular case, despite our efforts. Equinor cannot accept any liability for any inaccuracies or omissions.